

## Manual DP3 Report

### 1. Conditions

- ecom-DP3
- PC with card reader and operation system Win2000 and higher
- SD card or MM card from ecom
- Card size: min. 32 MB - max. 2 GB
- Card formatted on 16 bit FAT

### 2. Install software

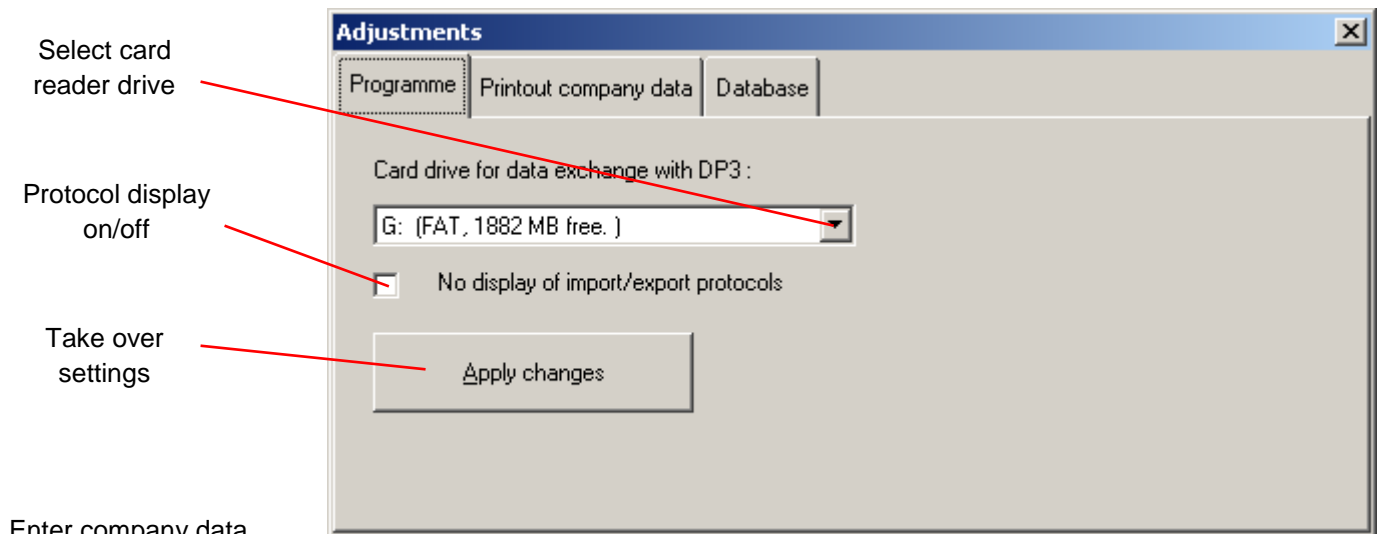
- Install software from product USB stick
- Download software from [www.ecom.de](http://www.ecom.de) and install.

### 3. Start software

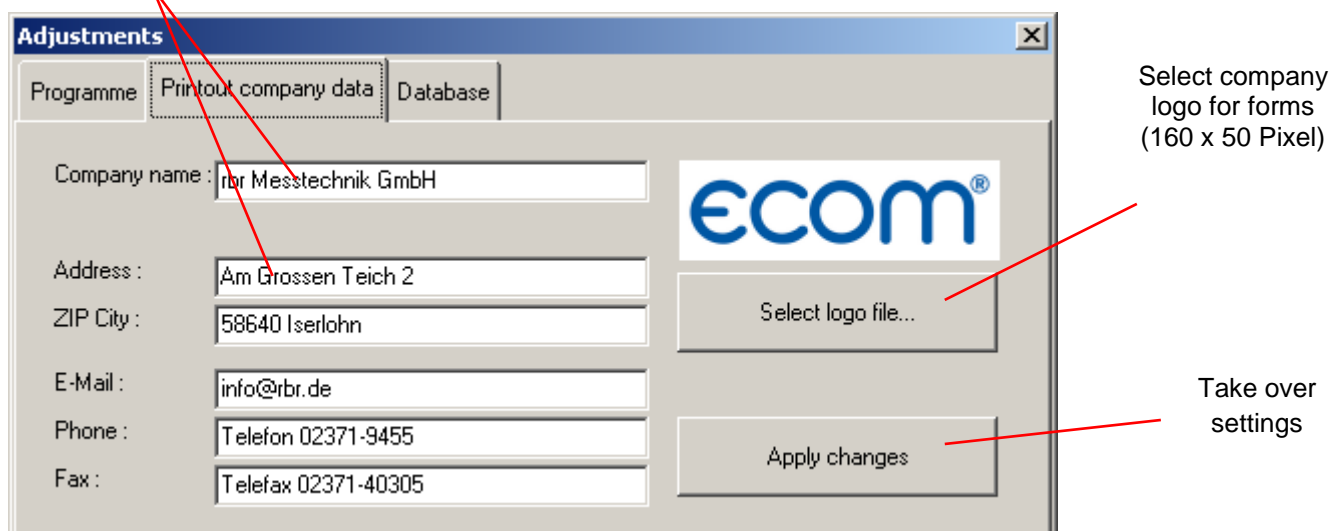
- Start by calling up „Start“ / „Program >“ / „DP3 Report“

### 4. Parameters

- Select „Settings“ / „Program“



Enter company data for forms

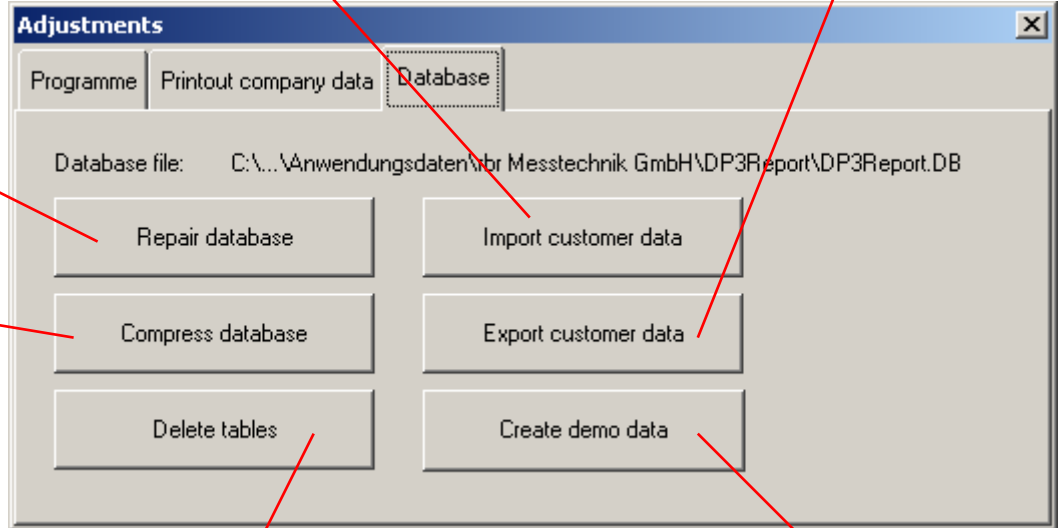


Import customer data in the format:  
**Customer number;Name;Street;ZIP/City;  
Phone;Others<CR/LF>**

Export customer data:  
**Customer number;Name;Street;ZIP/City;  
Phone;Others<CR/LF>**  
as csv file

Try to correct errors in the database

Storage of the data gets minimized



Caution: all data removed from the database

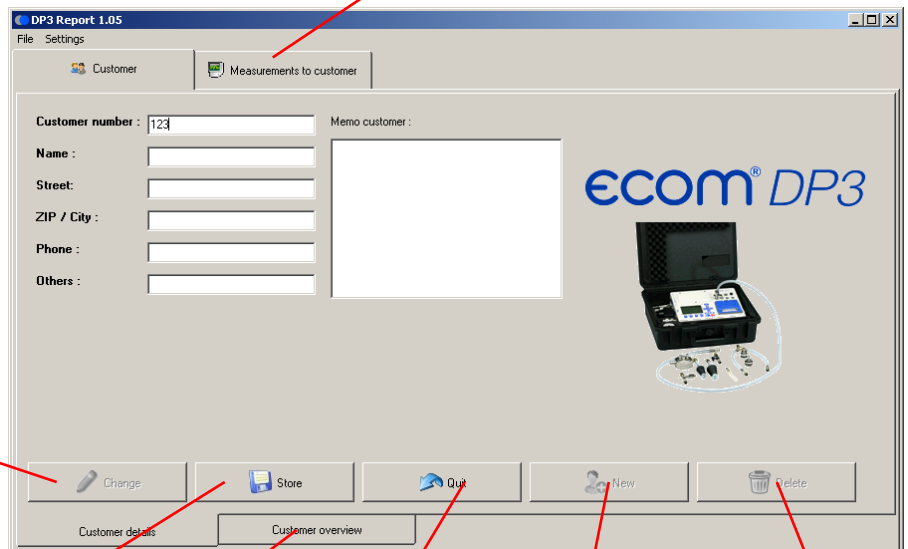
Create a demo record on the SD or MMC for each type of form

**5. Create customer data**

- Select tab „Customer“ / „Customer details“
- Press button „New“
- Type in customer number
- Activate field „Name“ with left mouse button
- Type in customer name
- Activate and fill out the other fields
- Store customer data with button "Save"

Stored measurements of the customer

Change customer data



Store customer data

List of all customers

Quit entry

Create new customer

Delete customer data

**6. Customer selection**

- Select tab „Customer“ / „Customer overview“
- Select desired customer with left mouse button
- To select multiple customers press <CTRL> and hold button
- To store selected customers to SD or MMC press "Store selected customers to card"

Stored measurements of the customer

Enter search term

Search customer

Create customer data

Delete selected customers

Selected customers will be written to SD or MMC

Customer number	Name	Street	ZIP / City	Phone
MT1	Name 1	Strasse 1	10000 Ort 1	02371-9455
MT5	Name 10	Strasse 10	10000 Ort 10	02371-9455
MT6	Name 11	Strasse 11	10000 Ort 11	02371-9455
MT7	Name 12	Strasse 12	10000 Ort 12	02371-9455
MT8	Name 13	Strasse 13	10000 Ort 13	02371-9455
MT9	Name 14	Strasse 14	10000 Ort 14	02371-9455
MT10	Name 2	Strasse 2	10000 Ort 2	02371-9455
MT11	Name 3	Strasse 3	10000 Ort 3	02371-9455
MT12	Name 4	Strasse 4	10000 Ort 4	02371-9455
MT13	Name 5	Strasse 5	10000 Ort 5	02371-9455
MT14	Name 6	Strasse 6	10000 Ort 6	02371-9455
MT2	Name 7	Strasse 7	10000 Ort 7	02371-9455
MT3	Name 8	Strasse 8	10000 Ort 8	02371-9455
MT4	Name 9	Strasse 9	10000 Ort 9	02371-9455

**7. Take over measurements of SD or MMC**

- Select tab "Measurements to customer" / "All measurements to customer"
- Insert SD or MMC in the card drive of the PC
- Press Button "Load from card" to take over the measurements
- Measurements are automatically mapped to the stored customer numbers (new customer numbers will be created newly)

Meas. rows available to this customer:

Date	Time	Measurement type	Measurement dur
06.01.00	02:01:07	Load and tightness check (load)	10
06.01.00	02:19:25	Load and tightness check (tightness)	9
06.01.00	02:54:59	Usability check (leak volume)	5

Forms to measurement row:

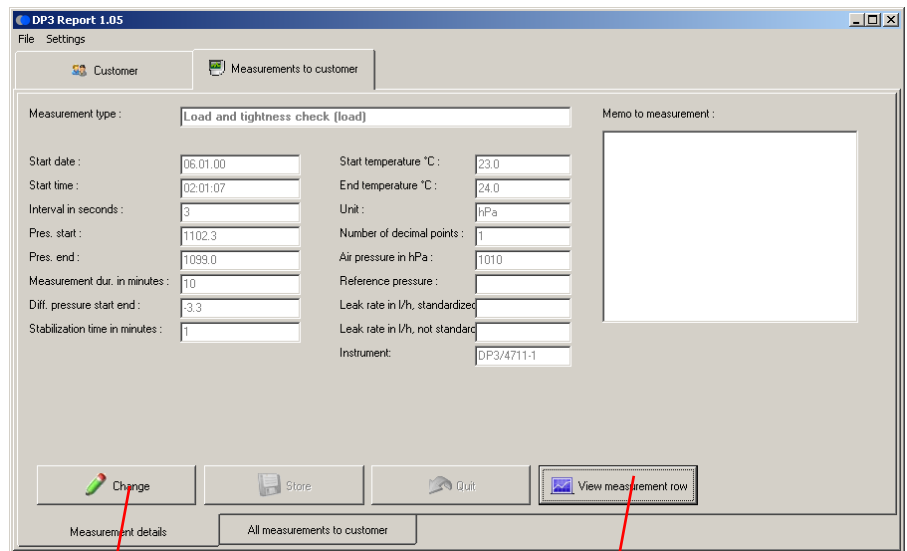
Load-And-Tightness TestTRGI2008

ecom<sup>®</sup> DP3

Take measurements from SD or MMC

### 8. Details of the measuring

- Select tab "Measurements to customer" / "Measurement details"
- Press button "Change" to create or change a memo field to the measurement
- Make entries/changes and save with button "Save"



Create or modify memo to measure

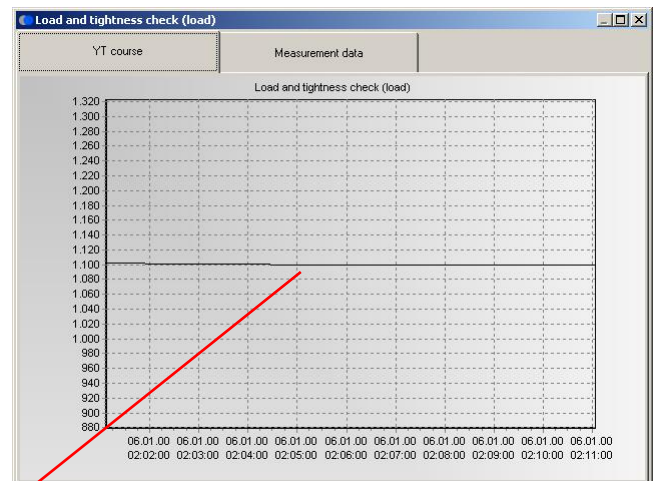
View measurement data / graphic

- Press button "View measurement row" to display the measurement history
- Press button "Data export" to store the data in Excel format (as xls or csv file)

### Export to Excel

The screenshot shows the 'Measurement data' tab in the 'Load and tightness check (load)' window. A table displays the measurement history with columns for Date, Time, and Measurement. A red arrow points from the 'Data export...' button to the text 'Export to Excel' above it. Another red arrow points from the table to the text 'Value history during the measurement' below it.

Date	Time	Measurement
06.01.00	02:01:10	1102.2
06.01.00	02:01:13	1102.2
06.01.00	02:01:16	1102.1
06.01.00	02:01:19	1102.1
06.01.00	02:01:22	1102.0
06.01.00	02:01:25	1101.9
06.01.00	02:01:28	1101.9
06.01.00	02:01:31	1101.9
06.01.00	02:01:34	1101.8
06.01.00	02:01:37	1101.8
06.01.00	02:01:40	1101.8
06.01.00	02:01:43	1101.8
06.01.00	02:01:46	1101.7
06.01.00	02:01:49	1101.7
06.01.00	02:01:52	1101.6
06.01.00	02:01:55	1101.6
06.01.00	02:01:58	1101.5

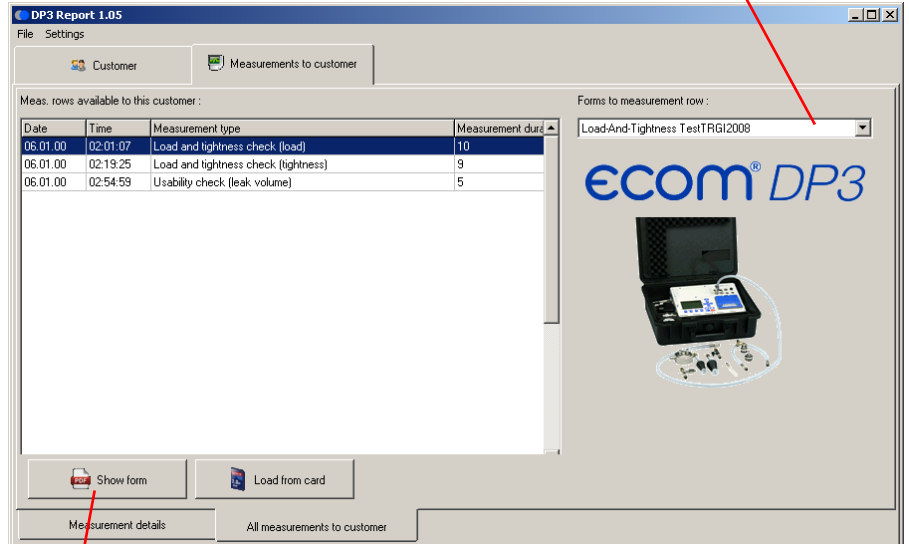


Value history during the measurement

**9. Fill out a form to the measurement**

- Select tab "Measurements to customer" / "All measurements to customer"
- To fill out the form press button "Show form"

Select form



Fill out a form

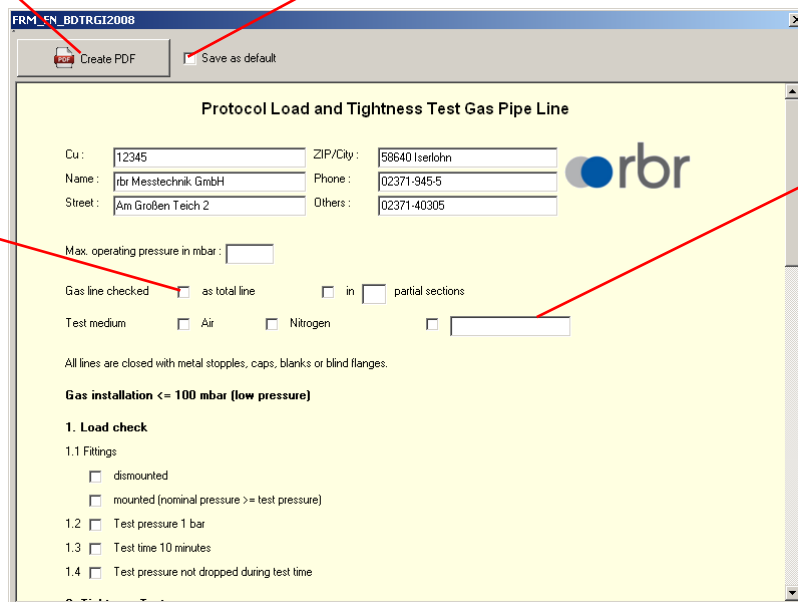
- Check boxes can be changed with the left mouse button
- Edit fields can be enabled with the left mouse button and then filled out
- If necessary save the current state of the form as default for all measurements of this type with "Save as default"

Create a pdf file

Save the current state as default

Check box

Edit field



- Take over the graphic of selected measurement (e.g. load test) with left mouse button
- If necessary select second measurement (e.g. tightness test) and take over the graphic with left mouse button
- Press "Create PDF" button to open the form as a PDF file  
(the PDF Reader installed on your PC is used - if necessary save or print file)

The screenshot displays the FRM\_EN\_BDTRGI2008 software interface, which is used for managing and visualizing measurement data. The interface is divided into several sections:

- Measurement Selection:** Two sections, "Load Test" and "Tightness Test", each with a "Test pressure / mbar" label and a "Click to take over current measurement" button. Red arrows point to these buttons with the following annotations:
  - "Take over the graphic of selected measurement" (pointing to the Load Test button)
  - "Select measurement and take over the graphic of selected measurement" (pointing to the Tightness Test button)
- Measurement List:** A table titled "Meas. rows available to this customer:" showing a list of measurements with columns for Date, Time, Measurement type, and Measurement duration.
 

Date	Time	Measurement type	Measurement duration
06.01.00	02:01:07	Load and tightness check (load)	10
06.01.00	02:19:25	Load and tightness check (tightness)	9
06.01.00	02:54:59	Usability check (leak volume)	5
- Data Visualization:** Two graphs showing test results:
  - Load Test:** A graph titled "Load Test" showing "Test pressure / mbar" on the y-axis (ranging from 900 to 1,300) and time on the x-axis (06.01.00 02:05:00 to 06.01.00 02:10:00). The data shows a constant pressure of approximately 1,100 hPa.
  - Tightness Test:** A graph titled "Tightness Test" showing "Test pressure / mbar" on the y-axis (ranging from 120 to 160) and time on the x-axis (06.01.00 02:20:00 to 06.01.00 02:25:00). The data shows a constant pressure of approximately 140 hPa.
- Additional Elements:**
  - A "Create PDF" button and a "Save as default" checkbox are located at the top left of the main window.
  - A "Show form" button and a "Load from card" button are located at the bottom of the measurement list window.
  - The "Forms to measurement row:" dropdown menu is set to "Load-And-Tightness TestTRGI2008".
  - An image of the ECOM DP3 device is displayed in the bottom right corner of the measurement list window.